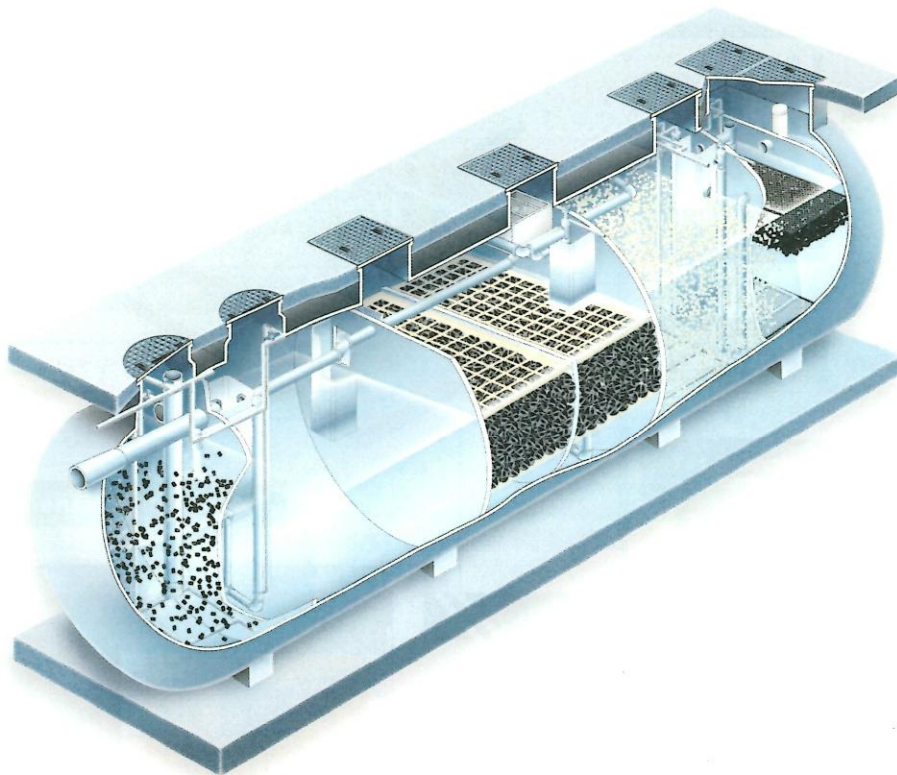


Self Contained, Plug and Play Commercial Onsite Treatment System

PCN_{model}

FRP Commercial Plant



FUJI CLEAN Model PCN

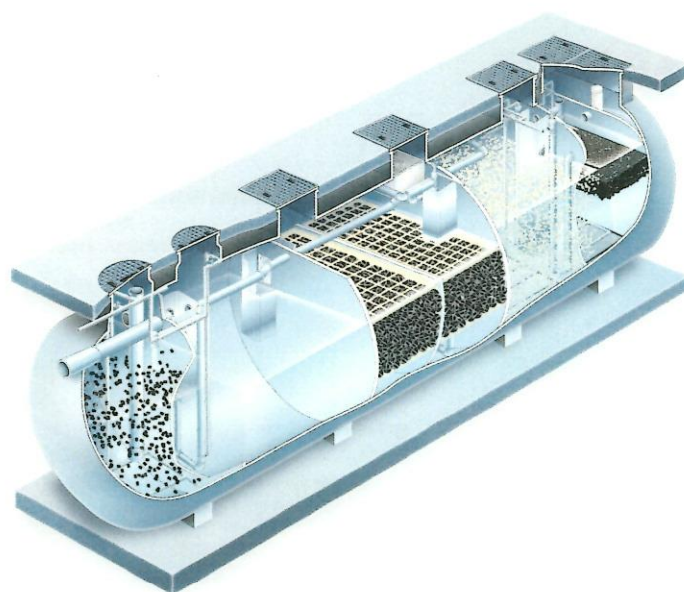
Commercial Plant

Lưu lượng thiết kế
10-60 m³/ngày.đêm

Vệ sinh mỗi
6 tháng/lần
Vận hành
mỗi tháng/lần

Chất lượng
nước đầu ra

BOD: ≤15mg/L
SS: ≤10mg/L
T-N: ≤20mg/L



Tính năng

Self-Contained φ2000 tank

Bể φ 2000 có thể vận chuyển trong 1 container 40 ft

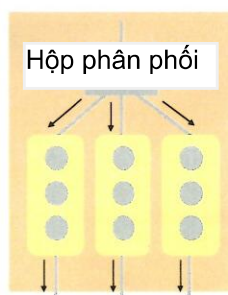
Cụm Thiết kế

Các bể có thể kết hợp lại với nhau

Máy thổi khí có màng lọc

Được sản xuất với tuổi thọ cao và tiêu thụ điện năng thấp bởi máy thổi khí Nhật Bản

Cluster design



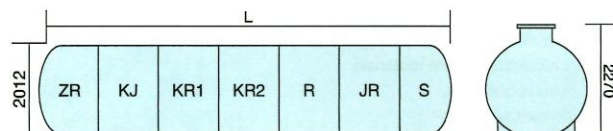
Đầu nối song song



Ví dụ: Trường hợp lắp đặt cho nhà ở trong trận động đất 2011

Cấu tạo của mỗi bể

Model PCN III
W_{pattern}



Ghi chú

ZR: Khoang lọc xúc tiến
KJ: Khoang lắng
KR1: Khoang kỵ khí 1
KR2: Khoang kỵ khí 2
R: Khoang lọc sinh học hiếu khí 2
JR: Khoang tuần hoàn và lọc
S: Khoang khử trùng

Kích thước bể

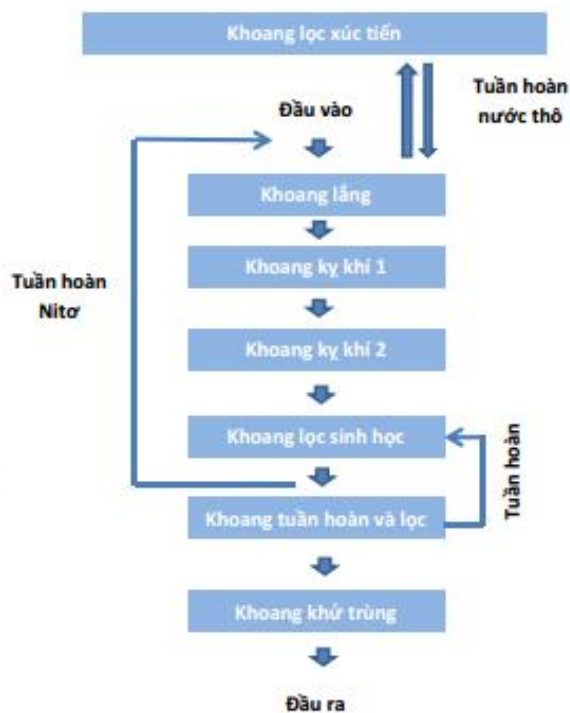
Thiết kế dựa trên chất lượng nước thải sinh hoạt tại Nhật Bản: BOD 200mg/L T-N 50mg/L

| Lưu lượng thiết kế [m ³ /ngày.đêm] | Tên Model | Chiều dài và số bể |
|---|------------------|--------------------|
| 10m ³ | PCNIII - 51W | 5.960 x 1 bể |
| 15m ³ | PCNIII - 75W | 10.250 x 1 bể |
| 20m ³ | PCNIII - 100W | 10.250 x 1 bể |
| 30m ³ | PCNIII - 51W x3 | 5.960 x 3 bể |
| 40m ³ | PCNIII - 100W x2 | 10.250 x 2 bể |
| 60m ³ | PCNIII - 100W x3 | 10.250 x 3 bể |

Kích thước container

| | | 20ft | 40ft | 40ftHC' |
|------------------------|------|-------|--------|---------|
| Kích thước ống đầu ra | Dài | 6,058 | 12,192 | 12,192 |
| | Rộng | 2,438 | 2,483 | 2,438 |
| | Cao | 2,591 | 2,591 | 2,896 |
| Kích thước ống đầu vào | Dài | 5,898 | 12,032 | 12,032 |
| | Rộng | 2,352 | 2,352 | 2,352 |
| | Cao | 33,1 | 67,5 | 76,3 |
| Kích thước cửa | Rộng | 2,343 | 2,343 | 2,343 |
| | Cao | 2,280 | 2,280 | 2,585 |

Hệ thống xử lý



— Dòng chảy cân bằng

Care, Handling and Safety Instructions for Fuji Clean Treatment Systems

Warning

Precautions and Handling Instructions of Chemical Disinfectants

■ Chemical Disinfectant Handling Instructions to Prevent Combustion, Explosion and Toxic Gas Build-Up

- Disinfection options include ultra violet (UV) and use of strong oxidizing agents such as chlorine.
- There are two types of chlorine agents; Inorganic and Organic Oxidizing. DO NOT combine these two types in the disinfection chamber.
Important ▶ Select an appropriate oxidizing agent. An organic chlorine usually provides better results.
- It is critically important to wear protective equipment such as gloves, facemasks and eyewear when handling chemicals.
- Dispose of chemical disinfectants at a facility equipped to handle hazardous waste materials
- Disinfectant chemicals may be combustible. DO NOT dispose of in rubbish bins.
Important ▶ Read and follow handling instructions printed on disinfectant packet

■ Precautions to Prevent Electrical Shock and Spark Explosion

- Only certified maintenance technicians may open the control box.
- Clear space within 50cm (20-inches) of blower control box.
- Keep electrical cord free, clear and unencumbered.
- Ensure outlet meets all electrical code requirements.
- Clear dust accumulation from electrical outlet on an annual basis.

Caution

■ Precautions to Prevent Property Damage and Personal Injury

- Do not place heavy loads on installed Fuji Clean treatment system.
- Fuji Clean systems can accommodate heavy loads with special installation techniques. Please contact a qualified installer for more information.

■ Precautions to Prevent Personal Accidents and Falls


- Close and secure all manhole lids, access covers and inspection ports after service
- Engage lock(s) if locking system is available
- Replace all cracked or damaged manhole lids, covers and ports
- Keep area surrounding access lids clear of rocks or foreign objects to prevent accidental slips and trips


■ Precautions to Ensure Proper System Operation and Clog Prevention

- DO NOT introduce non-decomposable items into the Fuji Clean treatment system such as disposable diapers, sanitary products, tissue paper and plastics.
- Remember- Fuji Clean treatment depends on living microbes. Therefore DO NOT introduce large quantities of bleach, pesticides, paint, poisons, or harsh detergents into system as these products could upset, harm or kill the treatment ecosystem.
- Keep excessive cooking grease out of system
- Use environmentally friendly toilet paper
- Use of sink grinders (garbage disposals) are not recommended due to heavy and inconsistent introduction of organic loads into system

■ Precautions to Ensure Proper Maintenance and Sludge Removal

- Fuji Clean system operation requires periodic inspections, maintenance and sludge removal. Please ensure that maintenance personnel have clear access to system for these functions

 **Warning:** This symbol refers to a hazard or unsafe practice which can result in severe personal injury or death.

 **Caution:** This symbol refers to a hazard or unsafe practice which can result in personal injury and/or the potential for product or property damage.

 <http://www.fujiclean.com.au/>

 **FujiClean**
Wastewater Treatment Systems

Fuji Clean Australia Pty Ltd
PO Box 1230, Oxenford, QLD 4210
Ph : 1300-733-619 Fax : 07-5580-0790
info@fujiclean.com.au